



PlaybackPro Plus

3.6 User Guide

The screenshot displays the PlaybackPro Plus software interface. At the top, there is a menu bar with 'PlaybackPro Plus', 'File', 'Edit', 'Window', and 'Help'. Below the menu bar is a toolbar with 'Save', 'Fullscreen', 'Close', and 'Action' buttons. The main area is a timeline table with columns for '#', 'Title', 'Comment', 'Section', 'TRT', 'Loop', 'Loop Duration', 'Freeze', 'Link', and 'Link Duration'. The table contains several rows of data, including 'Welcome', 'Message from Headquarters', 'Sales & Marketing', 'Intro to Break', 'New Product Launches', 'Strategic Alliances', 'G.S. Day 1 Close', and 'Afternoon Overview/Lead to Lunch'. Below the timeline are two preview windows. The left preview window shows a scene with orange trees and is titled 'Strategic Alliances'. The right preview window shows a night cityscape and is titled 'G.S. Day 1 Close'. Between the preview windows is a 'Preview' section with a 'Program' timecode of '00:00:39:35' and a 'Setup' button. At the bottom of the interface is a control panel with various buttons and sliders, including 'Take (return)', 'Kill (esc)', 'Goto 10', 'Goto 20', 'Goto 30', and playback controls like 'Goto In', 'Goto Out', and speed settings (-8x, -2x, -1x, 1x, 2x, 8x).

#	Title	Comment	Section	TRT	Loop	Loop Duration	Freeze	Link	Link Duration
Take	Welcome	K. Connelly		00:02:07:47	<input type="checkbox"/>	+0.00	<input type="checkbox"/>	<input checked="" type="checkbox"/>	+0.00
Take	Message from Headquarters	Pete Daniels		00:01:41:28	<input type="checkbox"/>	-1.00	<input type="checkbox"/>	<input checked="" type="checkbox"/>	2.00
Take	Sales & Marketing	Cindy Matthews-Korne		00:01:59:55	<input type="checkbox"/>	+0.00	<input checked="" type="checkbox"/>	<input type="checkbox"/>	+0.00
Take	Intro to Break	720p		00:03:22:09	<input checked="" type="checkbox"/>	+0.00	<input type="checkbox"/>	<input type="checkbox"/>	+0.00
Take	New Product Launches	Jay Sinclair		00:04:23:03	<input type="checkbox"/>	+0.00	<input checked="" type="checkbox"/>	<input type="checkbox"/>	+0.00
Take	Strategic Alliances	Andretti/Capeshaw		00:04:13:56	<input type="checkbox"/>	+0.00	<input checked="" type="checkbox"/>	<input type="checkbox"/>	+0.00
Take	G.S. Day 1 Close	Bill Beckman	2010 President's Club	00:01:35:05	<input type="checkbox"/>	+0.00	<input type="checkbox"/>	<input checked="" type="checkbox"/>	-3.00
Take	Afternoon Overview/Lead to Lunch	Jeff Dunn		00:04:36:14	<input checked="" type="checkbox"/>	1.00	<input type="checkbox"/>	<input type="checkbox"/>	+0.00

Table of Contents

PlaybackPro Plus Operation	2
Before You Begin	2
Layout	3
Preview / Program	3
Playlist	4
Clip Settings	5
Navigation Controls	6
Show Controls	6
Take	7
Program's End	8
Kill	9
Edit Multiple Mode	9
SimpleSync Basics	10
Controls	11
Direct Command	11
Clock Sync	11
NTP Basics	12
Networking	12
Setting up an NTP Server	13
Setting up NTP Clients	14
Troubleshooting NTP	15
UDP and TCP IP Basics	16
The UDP and TCP PlaybackPro Plus Protocol	17
Keyboard Shortcuts	19
System Settings	20

Operation

Before You Begin:

PlaybackPro Plus is a *multi channel* player, with more extensive controls for advanced operators than PlaybackPro.

In order to do Cuts and Transitions, a Preview clip must be pre-rolled while the Program clip is playing. When a clip is placed in Preview it is *automatically and immediately pre-rolled*, even if a clip is playing in Program. This is different than in PlaybackPro. Subsequently, the operator must be aware of machine limitations (especially disk bandwidth). When doing a mix transition, two clips are playing simultaneously, which requires much greater computer resources. For HD playback, a MacPro with an internal or external RAID array is recommended.

PlaybackPro Plus can be used with the SimpleSync application for easy and flexible multiple machine synchronization (sync rolls). PlaybackPro Plus requires Mac OSX 10.5 (Leopard) or newer. 3GB of RAM or more is recommended.

PlaybackPro Plus scales to any hardware, but may be limited by the computer's processor speed, disk bandwidth and graphics power.

It is designed to run on a system with two outputs (or a laptop with an external output). The primary screen (the one with menus) is for the interface. The secondary output (which can be reordered under Displays, in the Hardware Section of System Preferences) is for playback.

PlaybackPro Plus automatically adjusts to the aspect ratio of the external display. To manually change the output resolution (or aspect ratio if no external display is present), click Setup in the top right corner of the Program Screen.

When a Show File is opened, the application looks for the USB Enabler Key. If not found, a dialog box will be displayed. If you have an Enabler Key, insert it and click Okay. If you do not have a key, click Run As Demo. Demo mode is fully-functional, except for a watermark that is displayed on the output. Demo mode is generally used for setting up a show off-line, or learning the application.

PlaybackPro Plus saves shows as individual documents. Multiple shows can be created and switched between.

Clips are *not* stored *internally within the Show File*, they are simply *references* of clips on a hard drive or network. For best results, store on a drive other than where the operating system and application reside. Virtually any file type can be played by installing third-party QuickTime plug-ins.

Layout:



Preview / Program:

PlaybackPro Plus is designed on a Preview/Program paradigm, similar to a production switcher. Program is what's going to the output, and Preview is what will play next. Preview is always in blue. Program is always in red.

When a clip is selected from the playlist, it is shown in Preview. Preview is used to set up levels, fades, in/out points and geometry, and allows you to select the next clip to send to the output (Program).

When a clip is Taken from Preview, it moves to Program and plays to the output with any attributes that you've set (in/out Points, fades, geometry, levels, etc). Clips are shown in Program exactly as they appear on the external output.

There are counters over Preview and Program for reference and easy count-outs. The green counter shows the time elapsed relative to the In Point. The red counter shows the time remaining relative to the Out Point.

The aspect ratio of the output is reflected in the Preview and Program sections.

Playlist:

	#	Title	Comment	Section	TRT	Loop	Loop Duration	Freeze	Link	Link Duration
Take		BBC Motion Gallery 6			00:01:41:28	<input type="checkbox"/>	+0.00	<input type="checkbox"/>	<input type="checkbox"/>	+0.00
Take		BBC Motion Gallery prese...			00:04:10:57	<input type="checkbox"/>	+0.00	<input type="checkbox"/>	<input type="checkbox"/>	-0.50
Take		Artbeats HD Library Dem...			00:01:35:05	<input type="checkbox"/>	+0.00	<input type="checkbox"/>	<input type="checkbox"/>	+0.00
Take		Wildlife			00:02:20:56	<input checked="" type="checkbox"/>	+0.00	<input type="checkbox"/>	<input checked="" type="checkbox"/>	+0.00
Take		NASA			00:01:00:55	<input type="checkbox"/>	+0.00	<input type="checkbox"/>	<input type="checkbox"/>	+0.00
Take		BBC- The Biography			00:01:06:06	<input type="checkbox"/>	+0.00	<input type="checkbox"/>	<input type="checkbox"/>	+0.00
Take		Cornell Lab of Ornithology			00:01:59:55	<input type="checkbox"/>	+0.00	<input type="checkbox"/>	<input type="checkbox"/>	+0.00
Take		Na Ma'ele O Kaua'i			00:05:29:57	<input type="checkbox"/>	+0.00	<input checked="" type="checkbox"/>	<input type="checkbox"/>	+0.00
Take		The Macaulay Library- Ar...			00:01:57:18	<input type="checkbox"/>	+0.00	<input type="checkbox"/>	<input type="checkbox"/>	+0.00
Take		Warren Miller's Higher Gr...			00:03:05:38	<input type="checkbox"/>	+0.00	<input type="checkbox"/>	<input checked="" type="checkbox"/>	+0.00

The Playlist shows *referenced* clips. Clips can be reordered by Dragging and Dropping, or by using the Move Up and Move Down items from the playlist ACTION POPUP MENU. The Clip Number field is for operator convenience, and does not affect the actual order of clips. However, the Clip Number *is* used by SimpleSync to reference clips. Since clips are only referenced, clicking Duplicate only creates a new reference, and does *not* copy the clip. If a clip has been moved or is off-line, its text will be grayed out. By clicking 'Locate' you can redirect the reference to a new location, however the clip *must* have the same name.

Changing the highlighted selection in the playlist always affects what is being seen in Preview.

Preview clips are always in blue. Program clips are always in red.

The playlist can easily be printed or saved as a PDF file.

Link and Link Duration: When a clip that's set to Link begins playback, the next clip in the Playlist will be loaded into Preview, and the Link Temp button in Show Controls is activated.

This is the same as manually selecting the next clip in Preview, clicking the Link Temp button, and setting the Link Duration manually in Show Controls. The clip in Preview (and Link Duration) can still be changed once the clip is playing.

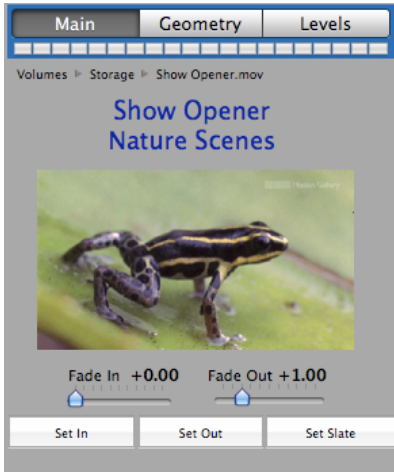
Freeze: Activates the Freeze Temp button in Show Controls when Clip begins playback.

Loop and Loop Duration: When a clip that's set to Loop begins playback, the Loop Temp button in Show Controls is activated.

This is the same as clicking the Loop Temp button and setting the Loop Duration manually in Show Controls.

Clip Settings:

The Clip settings determine how a clip is played back in Program, and only affects the selected clip (whether in Preview or Program). All settings are saved automatically when the Show File is saved.



Main Tab

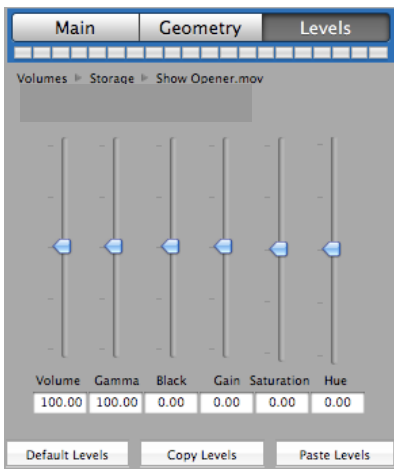
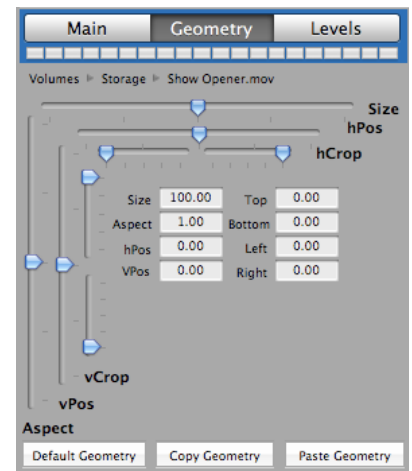
- **File Path Indicator** - Shows the path and name of the referenced file.
- **Set In** - Sets where clip will begin playback.
- **Set Out** - Sets where clip will end playback.
- **Set Slate** - Used to set the Slate image for that clip.
- **Fade-In Duration** - Tells clip how long to Fade-In on start.
- **Fade-Out Duration** - Tells clip how long to Fade-Out on end.

Geometry

Controls the size, aspect ratio and positioning of the clip being previewed and will be stored as altered. If the clip is in Program, changes are seen on the video output (as well as in the Program section).

Geometry can be Copied and Pasted between clips using the Copy Geometry and Paste Geometry Buttons.

Geometry can be reset by clicking the Default Geometry Button.



Levels

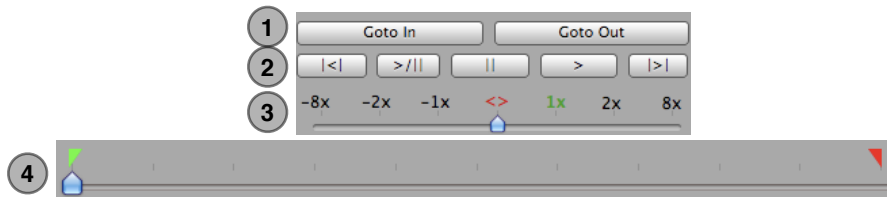
Affects the black level, gain, gamma, color, hue and volume of the current clip. If the clip is in Program, changes are seen on the video output (as well as in the Program section).

Levels can be Copied and Pasted between clips using the Copy Levels and Paste Levels Buttons.

Levels can be reset by clicking the Default Levels Button.

Navigation Controls:

These are used for finding specific parts of a clip to set In, Out and Slate points. There is a set of controls for both Preview and Program.



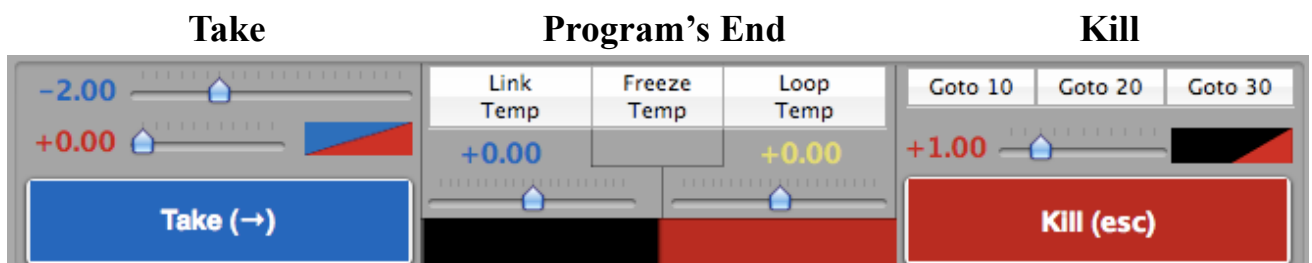
(1) Goto In / Out - Moves the playback position to the In or Out Point.

(2) Control Buttons - Fast Reverse, Play-Pause Toggle, Pause, Play and Fast Forward buttons (in order).

(3) Shuttle - Temporarily changes the playback speed. Primarily used to set up a clip in Preview, however it can be used in Program. Clips in Program always begin playback at normal speed.

(4) Scrubber - Used to find specific parts of a clip so that In, Out, and Slates can be set. Primarily used in Preview, however can be used while in Program. When a Preview clip is Taken to Program, it starts from its In Point regardless of the Scrubber Position.

Show Controls:



The Show Controls breakdown into 3 areas: Take, Program's End and Kill. Each is covered in the following sections.

Take:



(1) Take Duration - Controls how the Preview clip transitions to Program when Take is clicked. A negative number creates a Dissolve (-3.00 = 3 second dissolve), zero creates a Cut, and a positive number creates a Delay (+3.00 = 3 second Delay).

(2) Fade On Take Duration - If Take is clicked while a clip is playing in Program, *and* the Link Duration is +0.00 or greater (a Cut or Delay), this control fades Program video and audio for the designated duration, before performing the Cut or Delay.

(3) Take - Takes Preview clip to Program. When a clip is already playing in Program, Take Duration determines how it is transitioned (i.e. Dissolve, Cut or Delay).

If there is nothing playing in Program, clicking Take causes the Preview clip to begin *playing immediately* (as a Cut), regardless of the Link Duration.

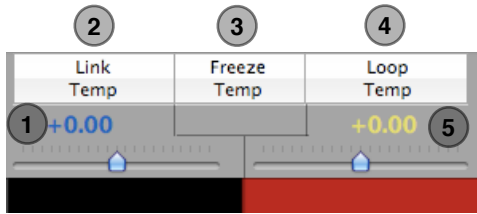
Possible Take Transitions:

①	②	③	Image
(1) Take Duration	(2) Fade On Take Duration	On Take (3)	
No Program Playing			
N/A	N/A	When Program is not playing, Preview will Cut to Program.	
Mixing Preview and Program Clips			
-x.00	N/A	Preview will Mix to Program for x seconds.	
Cutting Preview and Program Clips			
+0.00	+0.00	Preview will Cut to Program.	
+0.00	+y.00	Preview will Cut to Program after Program fades for y seconds.	
Delay between Preview and Program Clips			
+x.00	+0.00	Preview will Cut to Program after Delay of x seconds.	
+2.00	+2.00	Preview will Cut to Program x seconds after Program fades for y seconds.	

Legend:

Blank	Not Applicable
-------	----------------

Program's End:



(1) Link Duration - Controls how the Preview clip transitions to Program when Link Temp is selected and Program clip has reached its end. A negative number creates a Dissolve (-3.00 = 3 second dissolve), zero creates a Cut, and a positive number creates a Delay (+3.00 = 3 second Delay).

(2) Link Temp - Temporarily Links or Unlinks Preview and Program based on the Link Duration. A negative number creates a Dissolve (-3.00 = 3 second dissolve), zero creates a Cut, and a positive number creates a Delay (+3.00 = 3 second Delay). Preview clip will not play if either Freeze Temp or Loop Temp is selected. This does not affect the clip's permanent Link setting.

(3) Freeze Temp - Temporarily freezes Program clip when it reaches its Out Point. A freeze can be terminated by either unselecting Freeze Temp, Taking a Preview Clip, or clicking Kill (esc). Program clip will not Freeze if Loop Temp is selected. This does not affect the clip's permanent Freeze setting.

(6) Loop Temp - Temporarily Loops or Un-loops Program clip. Click Kill (esc) to immediately end a loop, or Take if a clip is loaded in Preview. This does not affect the clip's permanent Loop setting.

(8) Loop Duration - Controls how a loop will transition upon itself. A negative number creates a Dissolve (-3.00 = 3 second dissolve), zero creates a Cut, and a positive number creates a Delay (+3.00 = 3 second Delay).

1	2	3	4	5	Loop, Freeze, and Link Transitions:	
Link Duration	Link Temp	Freeze Temp	Loop Temp	Loop Duration		Image
No Program Playing						
	O	O	O		Program will End.	
Loop						
		●	●	-x.00	Program will loop with a Mix of x seconds.	
		●	●	-0.00	Program will loop with a Cut.	
		●	●	-x.00	Program will loop with a Delay of x seconds.	
Freeze						
		●	○		Program will Freeze.	
		●	○		Program is Frozen.	
Link						
-y.00	●	○	○		Preview will Mix to Program for x seconds.	
+0.00	●	○	○		Preview will Cut to Program.	
+y.00	●	○	○		Preview will Cut to Program after Delay of x seconds.	

Legend

✘	Button Activated
O	Button NOT
Blank	Not Applicable

Kill:



(1) Goto Buttons: The Goto 10 / Goto 20 / Goto 30 buttons set the Playback position to 10, 20 or 30 seconds from the clip's Out Point.

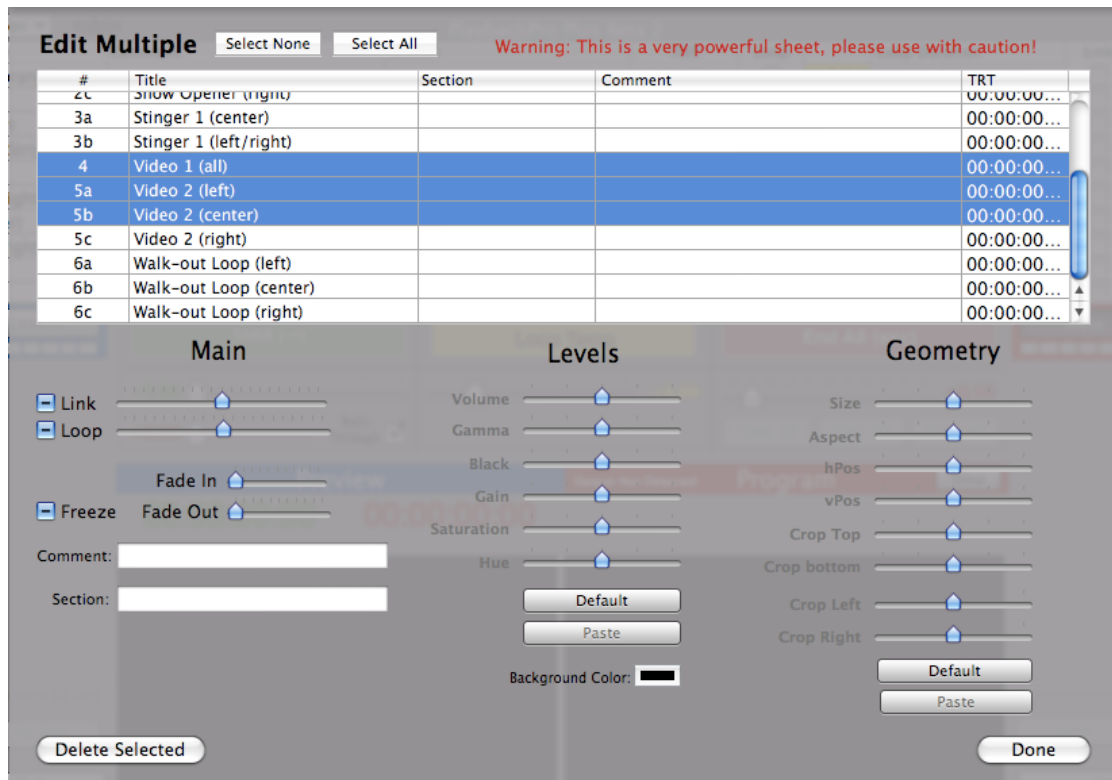
(2) Kill Duration - Specifies how long audio and video will fade for a clip in Program when Kill (esc) is clicked.

(3) Kill (esc) - Ends Program playback. Preview will not Link.

Kill Duration	Result	Image
+0.00	Program will End, Preview will not start.	
+x.00	Program will fade-out for x seconds, Preview will not start	

Edit Multiple Mode:

The **Edit Multiple Mode** may be selected from the Action Menu. It controls common settings across multiple clips.



SimpleSync Basics

SimpleSync controls multiple computers running PlaybackPro Plus simultaneously (sync roll), and is a companion to the PlaybackPro Plus application.

It utilizes Apple's Bonjour technologies for easy discovery and communication over TCP/IP networks (ethernet, etc.). SimpleSync acts as a command server, while instances of PlaybackPro Plus act as clients.

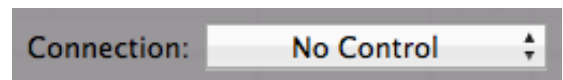
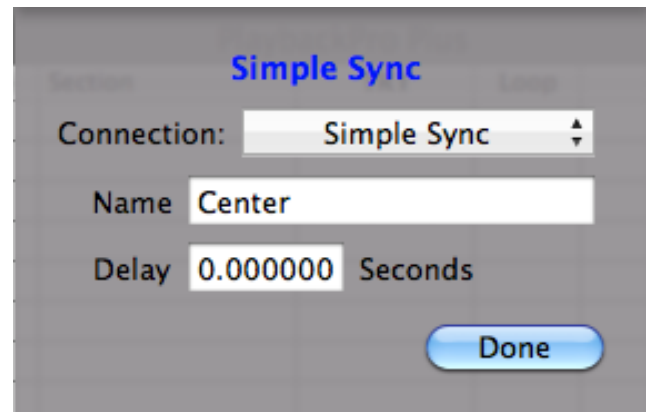
Clips can be loaded into Preview on PlaybackPro Plus clients by typing their Clip Numbers directly into SimpleSync. Clip Numbers can be assigned to the same, or to different clips, on each computer. This makes sync roll recall easy.

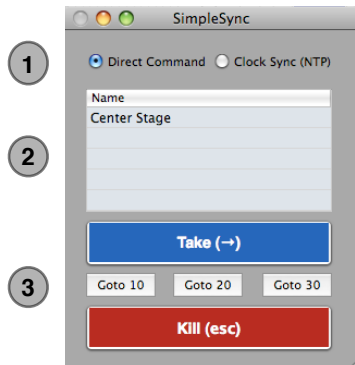
PlaybackPro Plus utilizes QuickTime for video decoding, which is based on each computer's real time internal clock. Successive frames will still occur at the expected time, even if a frame needs to be dropped.

If clips on different computers are started at exactly the same time, they will remain in sync as long as their internal clocks do not drift apart during the duration of the clip.

OSX's built in NTP (Network Time Protocol) can be used to eliminate clock drift for extremely accurate sync (for further information see NTP).

To use SimpleSync, select it from the Connection popup menu. SimpleSync must be running on the network for this option to be available. Select No Control from the Connection popup menu to stop all communications.





SimpleSync Controls:

(1) **Sync Type:** Determines how PlaybackPro Plus clients are cued.

(2) **Client List** - A list of connected PlaybackPro Plus clients.

(3) **Show Controls** - These controls affect Take, Kill and Goto 10/20/30.

Direct Command:

Direct Command is quick and easy, but should only be used when absolute synchronization isn't necessary.

When Direct Command is used, PlaybackPro Plus clients are triggered in *nearly* instantaneous succession. There may be a small latency between triggering the first computer and the last one, especially when a large number of computers are used.

The clocks can also be synchronized using NTP to negate any effect from drifting clocks (see NTP Basics).

Clock Sync (NTP):

Clock Sync assumes the client computers' clocks are in perfect sync. Each computer is assigned a time in the very near future to begin playback. The delay before the cue allows communication between all computers to occur, eliminating the latency that may happen with Direct Command. The delay may be increased if there are a large number of computers.

NTP Basics:

NTP is built into Mac OSX and it is used by the 'Set Date and Time' Preference Pane. It generally acts as a client of an Apple time server, but can point to a time server on a local network. Although not an exposed feature in OSX, it can also be turned into a time server.

NTP is setup by a configuration file called `ntp.conf` that is placed in the directory `/etc`. Since the `/etc` directory is hidden from the user, unix commands are used to copy it into place via Apple's terminal application.

WARNING

Mac OSX supports network multihoming. Multihoming allows computers to have multiple simultaneous network connections (i.e. wireless and ethernet).

It is very important to only have a single point of connection between SimpleSync (Server) and PlaybackPro Plus (Clients) when synced together.

Networking:

Computers should be networked with a gigabit ethernet switch.

The `ntp.conf` files provided by DT Videolabs assume the use of the 192.168.1.x address range. Other address ranges may be used, but the client `ntp` files would have to be modified.

The server (`ntp` and SimpleSync) should have the address 192.168.1.100. PlaybackPro Plus clients should use 192.168.1.101 through 192.168.1.200. All computers should use net mask 255.255.255.0. All other fields in the Networking preference panel should generally be left blank unless internet access is absolutely required.

All other network ports such as Airport (wireless) must be turned off.

Setting up an NTP Server:

The time server is generally the computer designated to run SimpleSync. This process can only be run on OSX 10.6 or earlier.

Download the Extras Folder from www.dtvideolabs.com/download.html. Once opened, move the ntp.conf file within the 'ntp.conf for server' folder to your Home Directory.

Launch Apple's Terminal Application and enter the following command:

```
sudo cp ntp.conf /etc
```

You may get a warning and may be asked for your password.

The configuration file for the server contains the following text:

```
server 127.127.1.0 prefer  
fudge 127.127.1.0 stratum 0
```

The first line tells the Mac to use its own internal clock (127.127.1.0) as its time base, and the second line tells it to serve that same time to clients.

Once this file has been properly moved into the /etc directory with the Unix command, 127.127.1.0 will automatically show up in the field next to Set Date and Time. Entering 127.127.1.0 directly into the field will not work. The checkbox to the left should be enabled. Once complete, restart the server and move on to the clients.

Setting up NTP Clients:

Download the Extras Folder from www.dtvideolabs.com/download.html. Once opened, move the ntp.conf file within the 'ntp.conf for client' folder to your Home Directory.

Launch Apple's Terminal Application and enter the following command:

```
sudo cp ntp.conf /etc
```

You may get a warning and may be asked for your password.

The configuration file for the clients contains the following text:

```
server 192.168.1.100 maxpoll 64
```

This line tells ntp to sync to an NTP server at 192.168.1.100 and to poll it every minute.

Once this file has been properly moved into the /etc directory with the Unix command, 192.168.1.100 will show up in the field next to Set Date and Time Automatically. Entering 192.168.1.100 directly into the field would not tell the client to poll the server more often. The checkbox to the left should be enabled. Once complete, restart the computer.

Troubleshooting NTP:

A simple way to determine if the clocks are locked is to:

- 1) uncheck the Set Date and Time Automatically checkbox
- 2) set the time ahead 1 hour
- 3) **save the time**
- 4) Enable the checkbox.

The time should reset to the time on the server.

Another way is to open the Terminal App and enter `ntpq -p`. You should get a reply that looks like this:

```
remote    refid    st t    when  poll   reach  delay  offset  jitter
=====
*local 192.168.1.100  2 u 168   512   377   96.551 7.941 685.438
```

When NTP is working correctly, offset and jitter should be non-zero values.

If clocks are not synchronizing, verify that the server is reachable on the network by using the ping command:

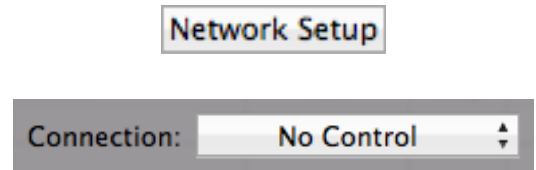
```
ping 192.168.1.100
```

Ping can be exited by typing command / period. If the server can't be pinged, check network connections and settings.

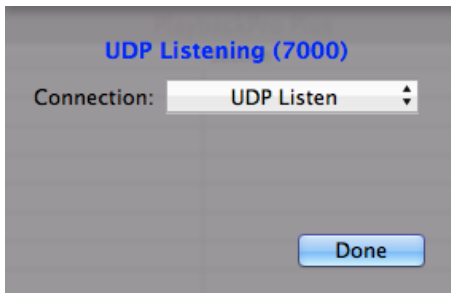
When rebooting, it is best to restart the server a minute or so before restarting the clients.

UDP and TCP Basics

To control PlaybackPro Plus from a device other than SimpleSync, use UDP or TCP IP control. Select UDP Listen or TCP Listen from the Connection popup menu in the Network Setup sheet. To stop all communications, select No Control from the Connection popup menu.

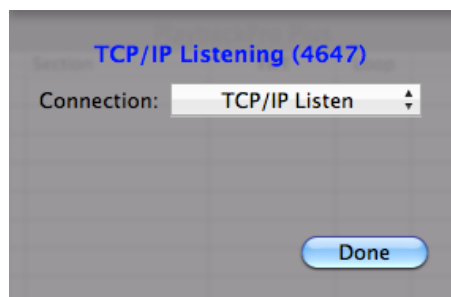


UDP



PlaybackPro Plus listens for commands on port 7000. Set the IP address (should be static) and port number on the device that will be controlling PlaybackPro Plus. UDP is a connection-free protocol. See The PlaybackPro Plus Protocol (UDP / TCP) section for commands.

TCP



PlaybackPro Plus listens for a connection on port 4647. Set the IP address (should be static) and port number on the device that will be controlling PlaybackPro Plus, and tell it to connect. Once connected, the Network Status will show TCP/IP Connected, rather than TCP/IP Listening.

Disconnect the remote source before selecting a different remote option. See The PlaybackPro Plus Protocol (UDP / TCP) section for commands.

The PlaybackPro Plus Protocol (UDP / TCP)

Command	Effect	Return
PR	Previous Clip	
NX	Next Clip	
CL	Clear Preview	
GOxxxx	Load clip xxx into Preview	
GTxxxx	Load clip xxx and Take	
TA	Take	
KL	Kill	
10	Goto 10	
20	Goto 20	
30	Goto 30	
SL	Loop Program	
EL	Unloop Program	
GExx.xx.xx.xx	Goto Time Elapsed	
GRxx.xx.xx.xx	Goto Time Remaining	
PA	Pause	
PL	Play from current location	
GN		program clip name
GU		program clip number
GD		program clip duration
VN		preview clip name
VU		preview clip number
VD		preview clip duration
TE		program Time elapsed
TR		program Time remaining
PS		Playback Status
LS		Loop Status (YES/NO)
AN		All clip names, comma delimited. Commas in names will be replaced with periods.
AU		All clip numbers, comma delimited. Commas in numbers will be replaced with periods.
AD		All clip durations, comma delimited.

Continued...

The PlaybackPro Plus Protocol (UDP / TCP) Continued

Command	Effect	Return
Sxxxx	Select Clip by ID	
Txxxx	Take Clip by ID	
ID	Return Clip IDs	
EI	Goto In Preview	
EO	Goto Out Preview	
ER	Fast Reverse Preview	
EF	Fast Forward Preview	
E-	Step Back Preview	
E+	Step Forward Preview	
ES	Mark In Preview	
EE	Mark Out Preview	
EP	Play/Pause Preview	
OI	Goto In Program	
OO	Goto Out Program	
OR	Fast Reverse Program	
OF	Fast Forward Program	
O-	Step Back Program	
O+	Step Forward Program	
OS	Mark In Program	
OE	Mark Out Program	
OP	Play/Pause Program	
I-	Link Minus	
I+	Link Plus	
L-	Loop Minus	
L+	Loop Plus	
T-	Take Minus	
T+	Take Plus	
K-	Kill Minus	
K+	Kill Plus	
F-	Take Fade Minus	
F+	Take Fade Plus	
SA	Save	
IT	Link Temp	
LT	Loop Temp	
FT	Freeze Temp	
BF	Window to Front	
SF		Show File Name

Keyboard Shortcuts:

Clips can be loaded into Preview by typing in the Clip Number. If a mistake is made while entering, the Delete key will cancel it.

Show Files

New Showshift command (⌘) N
 Open Showcommand (⌘) O
 Close Showcommand (⌘) W
 Save Showcommand (⌘) S
 Save Show Asshift / command (⌘) S
 Page Setup.....shift /command (⌘) P
 Printcommand (⌘) P

Show Controls

Select Previous Clip.....↑
 Select Next Clip.....↓
 Clear Preview.....←
 Takereturn
 Killesc
 Decrease Take Durationoption ;
 Increase Take Duration.....option ‘
 Decrease Link Durationoption A
 Increase Link Duration.....option S
 Decrease Fade On Take Durationoption D
 Increase Fade On Take Durationoption F
 Decrease Loop Durationoption G
 Increase Loop Durationoption H
 Decrease Kill Durationoption J
 Increase Kill Durationoption K
 Toggle LoopTempoption L
 Toggle Link Tempshift / option L
 Toggle Freezeshift / control / option L
 Goto 10option 1
 Goto 20option 2
 Goto 30option 3

Navigation Controls - Preview

Toggle Play in Previewoption space
 Step Forward in Previewoption →
 Step Backward in Preview.....option ←
 Play Faster in Previewoption ↑
 Play Slower in Previewoption ↓
 Goto Incommand (⌘) -
 Goto Out.....command (⌘) =

Navigation Controls - Program

Toggle Play in Programshift / option space
 Step Forward in Programshift / option →
 Step Backward in Program.....shift / option ←
 Play Faster in Programshift / option ↑
 Play Slower in Program.....shift / option ↓
 Goto Inshift / command (⌘) -
 Goto Outshift / command (⌘) =

Clips

New Clipscommand (⌘) N
 Delete Clipcommand (⌘) delete
 Duplicate Clip.....command (⌘) D
 Select Previous Clip.....↑
 Select Next Clip.....↓
 Preview Mark Incommand (⌘) [
 Preview Mark Out.....command (⌘)]
 Preview Mark Slatecommand (⌘) \
 Program Mark In.....shift / command (⌘) [
 Program Mark Out.....shift / command (⌘)]

Edit

Cutcommand (⌘) X
 Copy.....command (⌘) C
 Paste.....command (⌘) V
 Select All.....command (⌘) A

Window

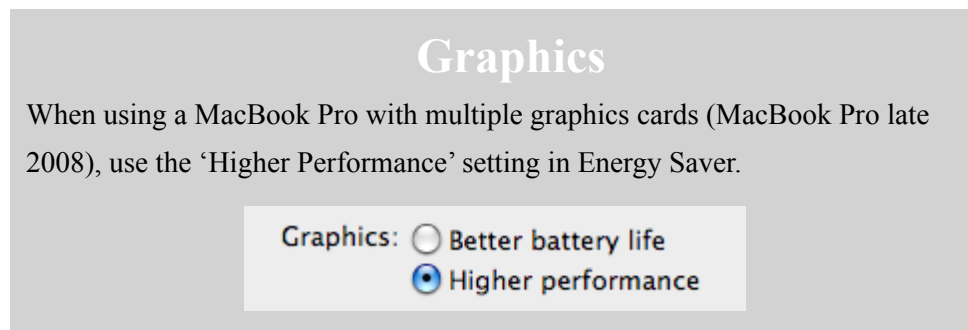
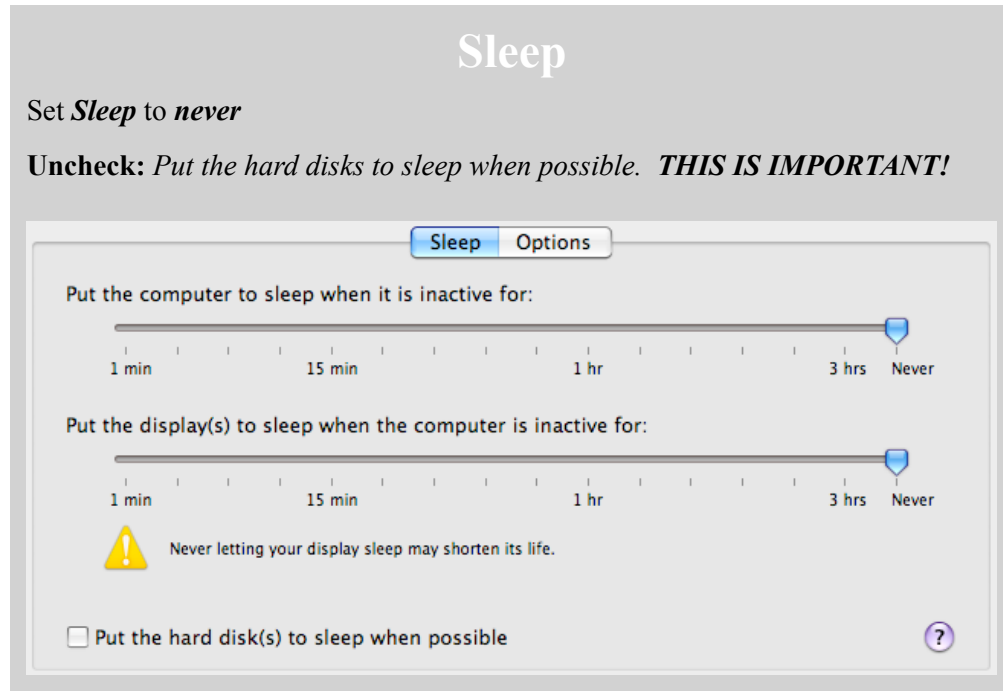
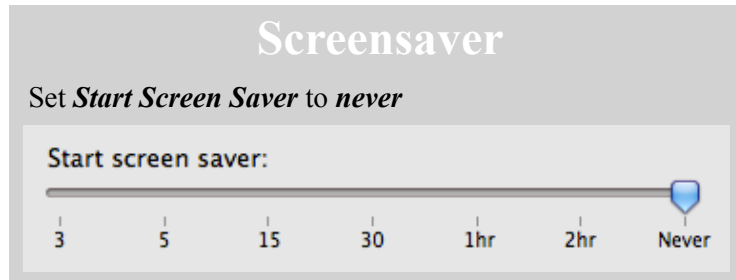
Toggle Full Screencommand (⌘) F
 Minimize to Dockcommand (⌘) M

Help

Display Help.....command (⌘) ?

System Settings:

When using PlaybackPro Plus in a show, it is important to set some global system settings. All of the following settings are found in ‘System Preferences’:



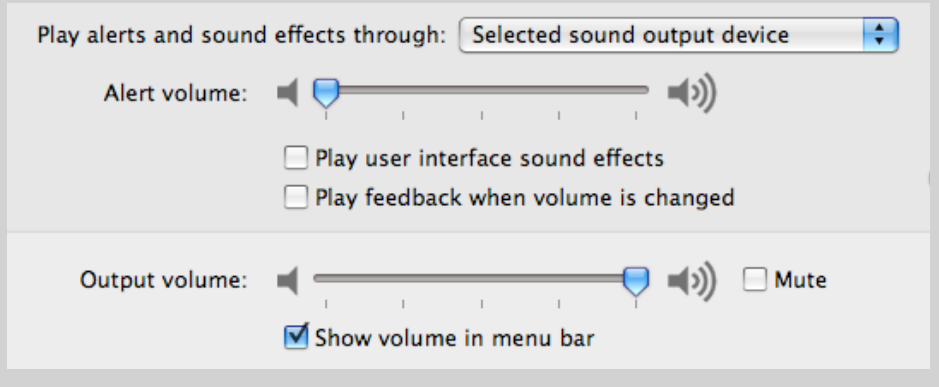
Sound

Set **Alert Volume** to zero

Uncheck: *Play user interface sound effects*

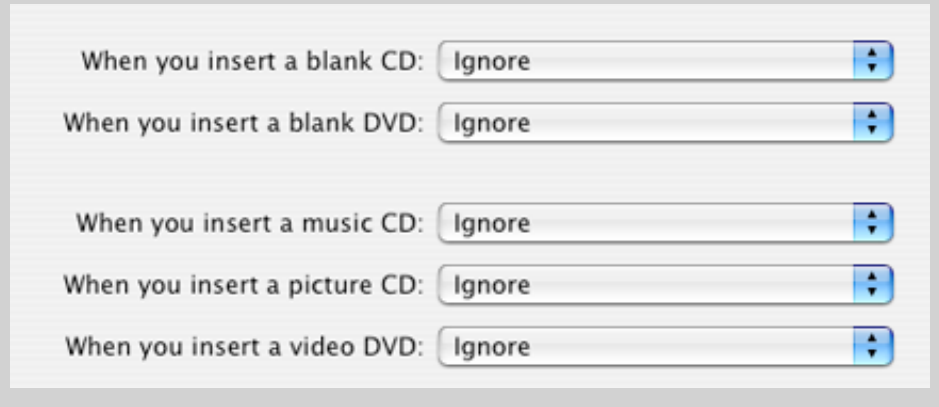
Uncheck: *Play feedback when volume is changed*

Set **Output Volume** to full.



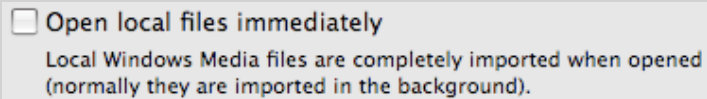
CDs and DVDs

CDs and DVDs: Set everything to **Ignore**



Flip4Mac

When using Flip4Mac Windows Media QuickTime Component, it is VERY important to uncheck 'Open Local Files Immediately' (Note: It is better to use Flip4Mac to transcode video to another codec, like ProRes 4:2:2, rather than run directly in PlaybackPro Plus).



Although it is not in the System Preferences application, it is best to unmount any network shares before going into show.